

Prime Industrial Estate

Ballantyne Ridge Business Park

Now Leasing

Property 3, 3-5 Endeavour Street, Wanaka



Warehouse
477m²



Office
226m²



Car Parks
10



Key Highlights

- In construction – Completion Q4-2022
- Contemporary design
- Premium location
- High stud warehouse
- Double-story office space
- Extensive on-site parking



Geoff McElrea
027 577 9607
geoff.mcelrea@colliers.com



James Valentine
021 777 772
james.valentine@colliers.com



Design - Build
Commercial + Industrial
Properties for Lease
www.henley.property

Prime Industrial Estate

Ballantyne Ridge Business Park

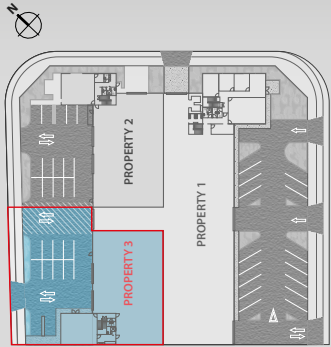
Now Leasing

Property 3, 3-5 Endeavour Street, Wanaka

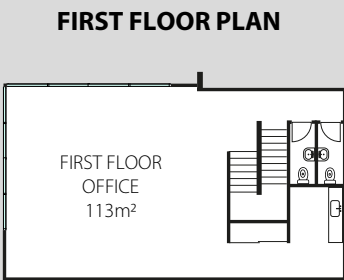
Just minutes from the CBD, this standout industrial development offers tenants a brilliant opportunity to secure high-quality premises in Wanaka's premier industrial precinct.

The high-profile site is orientated for maximum exposure to sun and features two vehicle crossings along with extensive parking. The high-stud warehouse incorporates two large, electrically operated roller doors and bright natural lighting from roof and wall skylights.

The modern, double-story office block provides a superb work environment with outstanding mountain views. The office facades provide generous signage options.



SITE PLAN



Geoff McElrea
027 577 9607
geoff.mcelrea@colliers.com



James Valentine
021 777 772
james.valentine@colliers.com



Design - Build
Commercial + Industrial
Properties for Lease
www.henley.property