

Retail | For Lease

Tenancy 1, 12 Sir Tim Wallis Drive, Wanaka

Property ID: HPTP1201



North West Elevation



South East Elevation



Sir Tim Wallace Drive Entrance

Key Highlights

- Premium position in Three Parks
- Contemporary retail space
- Own frontage and signage
- High-traffic volumes
- Suitable for all types of retail
- Construction starts 2023 with the planned opening in 2024



Area
332m²



Car Parks
4



Tenancy 1: A street-level retail tenancy positioned within the high-profile location of Three Park. This retail premise has an area of 332m² including amenities.

Strategically located at the gateway of Three Parks, Central Otago's newest commercial precinct, this modern retail and office premises offers stunning street appeal. Retail, hospitality and service industries are proposed for the ground floor with the upper floors designated for commercial offices and professional suites. Entrance to the entire complex is via the dual-access centrally located atrium. This allows entry from Sir Tim Wallis Drive and from the carpark. The atrium houses lift and stair access to all upper floor tenancies. The property offers multiple tenancy options to suit a wide range of businesses.



Geoff McElrea
027 577 9607
geoff.mcelrea@colliers.com

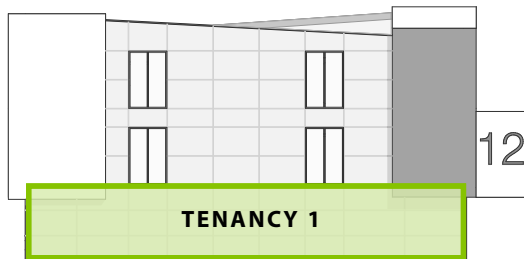
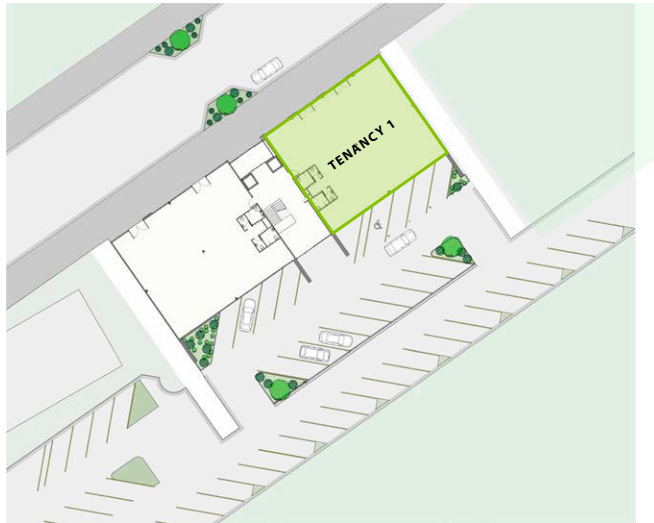


Design - Build
Commercial + Industrial
Properties for Lease
www.henley.property

Retail | For Lease

Tenancy 1, 12 Sir Tim Wallis Drive, Wanaka

Property ID: HPTP1201



North East Elevation



North West Elevation



Geoff McElrea
027 577 9607
geoff.mcelrea@colliers.com



Design - Build
Commercial + Industrial
Properties for Lease
www.henley.property