

Office | For Lease

Tenancy 4a, 12 Sir Tim Wallis Drive, Wanaka

Property ID: HPTP1204a



North West Elevation



South East Elevation



Sir Tim Wallace Drive Entrance

Key Highlights

- Premium location
- Elevated views
- Contemporary Office Space
- On-site parking
- Lift Access
- Construction starts 2023 with the planned opening in 2024



Area
202m²



Car Parks
2



Tenancy 4a: A first floor office space positioned within the high-profile location of Three Park. This office premise has an area of 202m² including shared amenities and 2 private car parks.

Strategically located at the gateway of Three Parks, Central Otago's newest commercial precinct, this modern retail and office premises offers stunning street appeal. Retail, hospitality and service industries are proposed for the ground floor with the upper floors designated for commercial offices and professional suites. Entrance to the entire complex is via the dual-access centrally located atrium. This allows entry from Sir Tim Wallis Drive and from the carpark. The atrium houses lift and stair access to all upper floor tenancies. The property offers multiple tenancy options to suit a wide range of businesses.



Geoff McElrea
027 577 9607
geoff.mcelrea@colliers.com

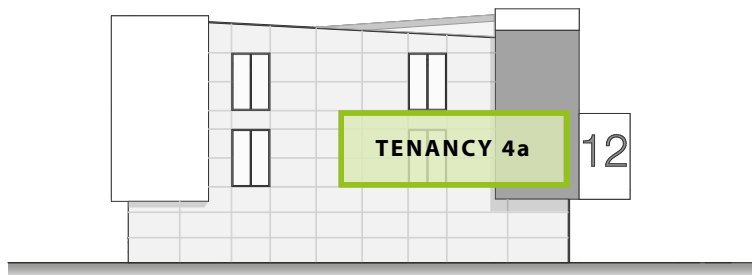
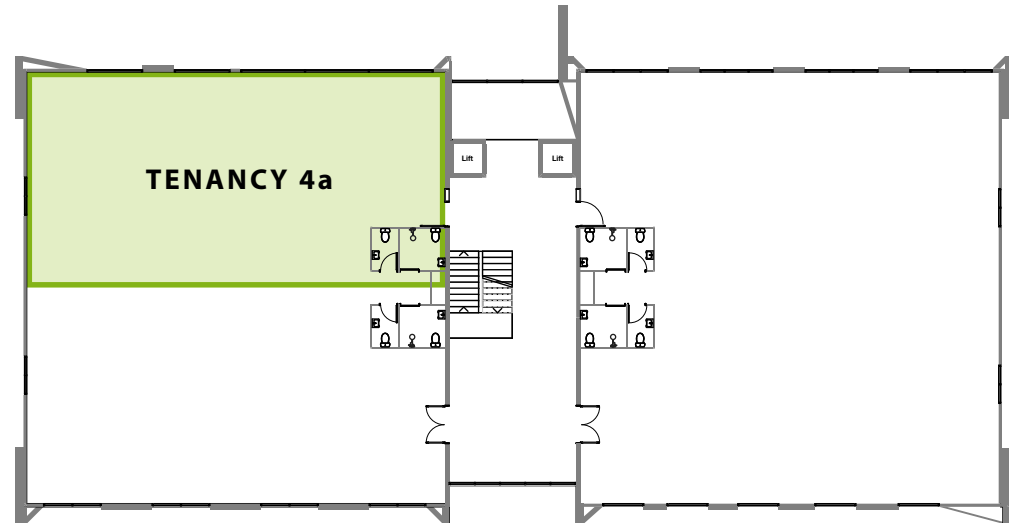


Design - Build
Commercial + Industrial
Properties for Lease
www.henley.property

Office | For Lease

Tenancy 4a, 12 Sir Tim Wallis Drive, Wanaka

Property ID: HPTP1204a



North East Elevation



North West Elevation



Geoff McElrea
027 577 9607
geoff.mcelrea@colliers.com



Design - Build
Commercial + Industrial
Properties for Lease
www.henley.property